

ENQUIRE NOW



# Itinerary

## Pretoria to Cape Town Route

### Day 1:

**06:30** Register and check-in at **The Pretoria Station Lounge**. Guests enjoy pre-departure drinks. Welcome snacks will be served on-board the train

**07:30** Boarding starts. Butlers usher guests to their suites. Suite orientation done by butlers.  
**Boarding concludes at 08:00am**

**08:30** The Blue Train departs from Pretoria Station (Will depart earlier once all guests have checked-in)

**10:30 – 12:00** First sitting for Brunch  
**12:30 – 14:00** Second sitting for Brunch

**15:30** High tea is served in the Lounge Car.

#### OFF-THE-TRAIN EXCURSION (Weather & time-permitting)

**17:10** The Blue Train arrives at Kimberley Station. Guests disembark and gather at the railway museum, from where they will be ushered to a bus, which transfers them to the Kimberley Open Mine Museum.

**17:30** Guests arrive at the Open Mine Museum for a tour of the mine. Guests are first taken to view interesting and historical sites. Guests are also taken onto an enclosed ramp on the edge of the Kimberly hole.

**18:35** Guests depart from the Open Mine Museum for Kimberley Station. At Kimberley Station guests are greeted with a glass of sherry. The sherry glass engraved with The Blue Train logo is a memento for guests to keep.

**19:10** The Blue Train departs Kimberley Station for the journey Southbound to Cape Town.  
  
*After this exciting tour, guests are welcome to refresh themselves and enjoy pre-dinner drinks served at any one of our lounges.*

**19:30 – 21:00** First sitting dinner  
**21:15** Second sitting dinner

**Remember, dinner is an elegant affair and men are requested to wear a jacket and tie and ladies elegant evening wear.**

*Guests enjoy post-dinner drinks, Cognacs and Cuban cigars in the Club Car before retiring to bed*

Worcester  
Matjiesfontein  
Laingsburg  
Beaufort West  
De Aar  
Kimberley  
Bloemhof  
Klerksdorp  
PRETORIA

CAPE TOWN



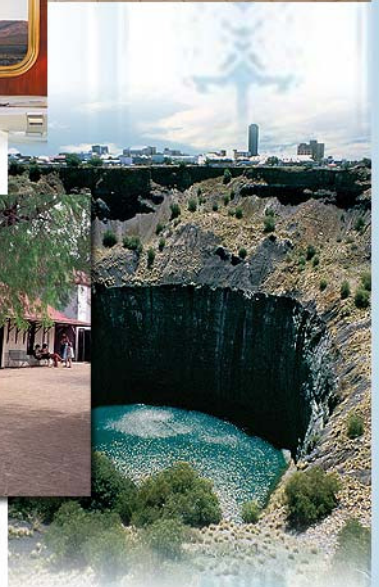
### Day 2:

(Next morning)

**07:00 - 10:00** Breakfast is served on a first-come-first-served basis. **THE BLUE TRAIN**  
A WINDOW TO THE SOUL OF SOUTH AFRICA

**12:00 – 14:45** Three-course lunch is served at leisure (on a first-come-first-served)

**15:00** The Blue Train arrives at **Cape Town Station**. Butlers usher guests to **The Blue Train Lounge**



ENQUIRE NOW